

# Lesson 6: Basic Rhythm: Note Types and 4/4 Time

The duration of musical sounds is indicated by different types of notes. These indicate how long or short to hold the note.

## quarter note

1 beat

q □

## half note

2 beats

h

## whole note

4 beats

w

One whole note equals four quarter notes.

One half note equals two quarter notes.

One whole note equals two half notes.

$w \square = q \square \square \square q \square \square \square q \square \square \square q \square \square \square$  /  
 $h \square = q \square \square \square$   
 $w \square = h \square \square \square$

**Time signatures** are placed at the beginning of a piece of music. They are made up of two numbers.

The top number shows the number of beats per measure.  
 The bottom number shows what kind of note will get one beat.

In  $\frac{4}{4}$  time there are four beats in each measure. A quarter note gets one beat.

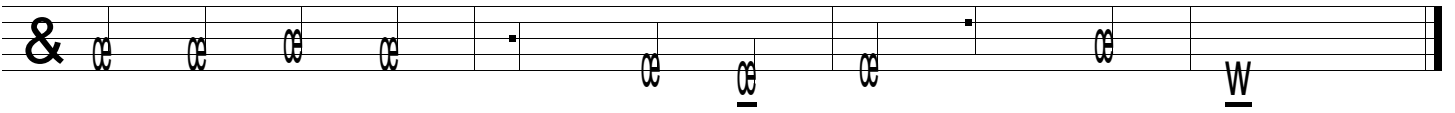
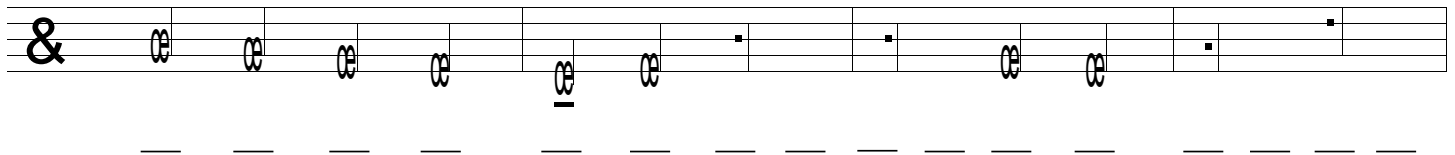
1. Clap the rhythm of the notes while counting the beats out loud.

4

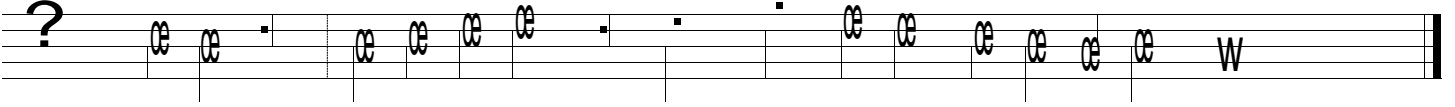
cel | cel | cel | cel | | · | · | | w | cel | cel | cel | cel | | cel | cel | · | | w ||

1 2 3 4    1 2 3 4    1 2 3 4    1 2 3 4    1 2 3 4    1 2 3 4

2. Write a  $\frac{4}{4}$  time signature after the clef sign. Write in the beat below the notes indicated. Then clap the rhythm while counting the beats out loud.



3. Write a  $\frac{4}{4}$  time signature after the clef sign. Write in the beat below the notes indicated.  
Draw the missing bar lines.



This music is intended for educational and personal use only. Any distribution outside these means is prohibited.  
Copyright © Theresa Chen | [www.OpusMusicWorksheets.com](http://www.OpusMusicWorksheets.com)