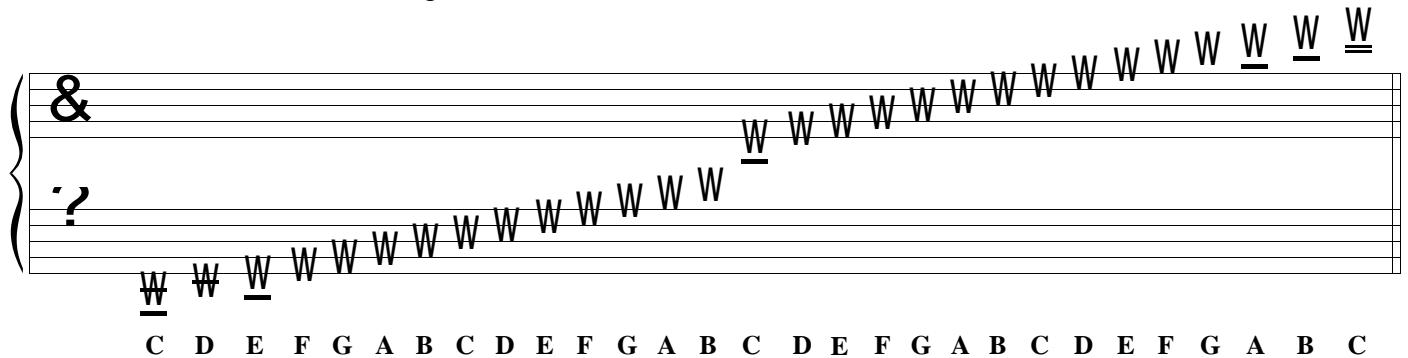
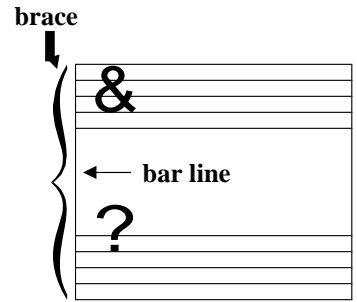


# Lesson 8: The Grand Staff

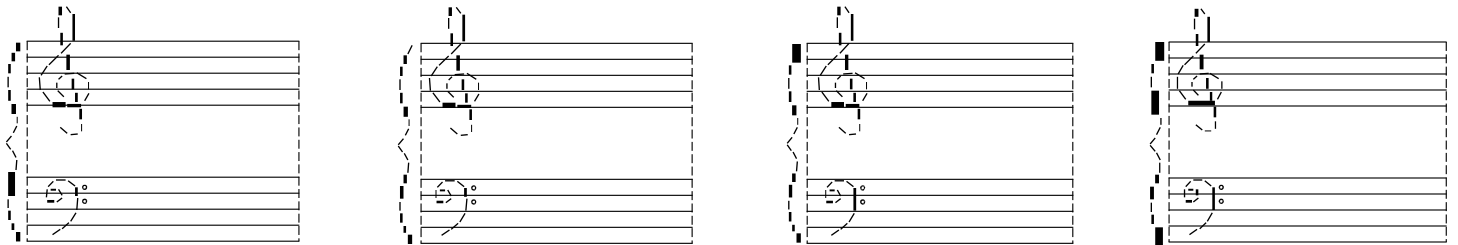
The brace is a curved line and bar line that combines the treble and bass staff.

staff.

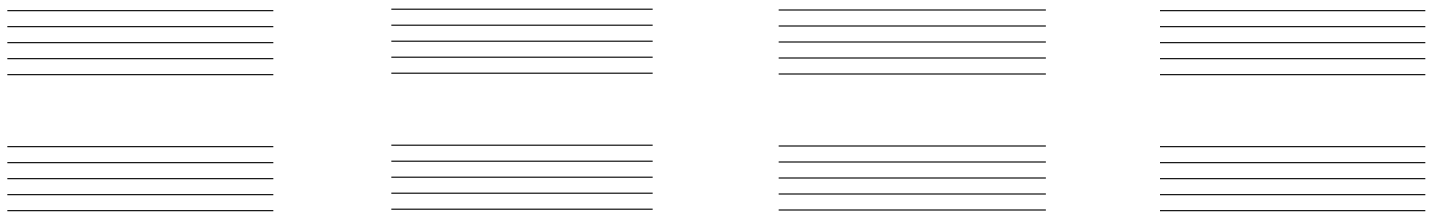
The Middle C note is on the ledger line that is between the treble and bass staff.



1. Draw the grand staff by tracing the braces, bar lines, and clefs.



2. Turn the following staff into grand staff by adding braces, bar lines, and clefs.



3. Write the letter name for each note.

