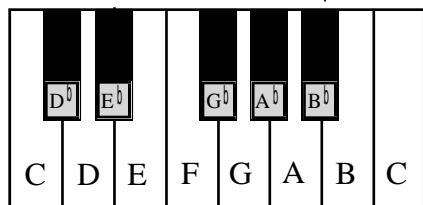


Lesson 16: Flats

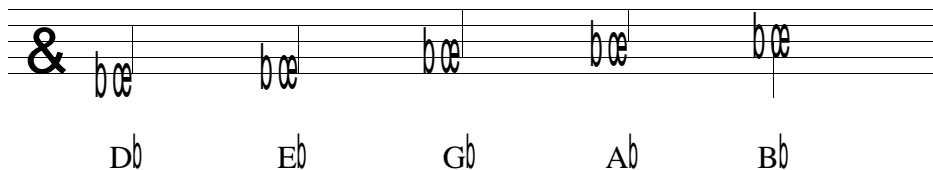
A **flat** sign (\flat) lowers the pitch of a note by a half step.

On the keyboard of a piano, the black key to the left of a white key is a half step lower and called a flat.

B^{\flat} is 1/2 step lower than B



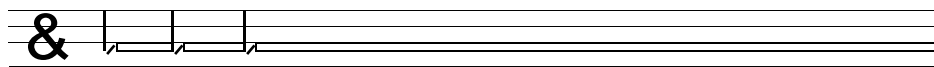
Examples:



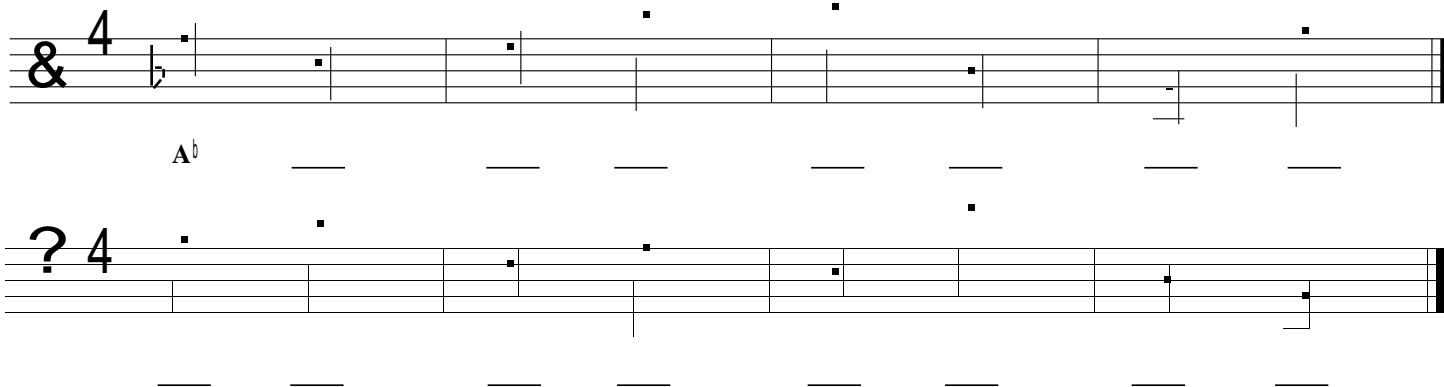
To say the name of a flatted note, say the letter name first and the flat next. For example, "B flat".

To write a flatted note on a staff, place the flat sign to the left of the note.

1. Try drawing flats by tracing over the dotted lines. Then draw five more flats on the staff.



2. Draw a flat sign in front of each note. Then write the names of the notes indicated.



3. Draw the notes indicated.

